

CITB Site Management Safety Training Scheme (SMSTS) 5 days



Introduction

The Building Safety Group are an accredited and leading training provider of the 5 day CITB Site Management Safety Training Scheme (SMSTS).

Who is it for?

This industry recognised course is ideal for companies which need to meet the ever increasing demand for evidence of sound health and safety on site. The course covers all relevant legislation and other aspects which affect safe working in the building, construction and civil engineering industries.

Aims

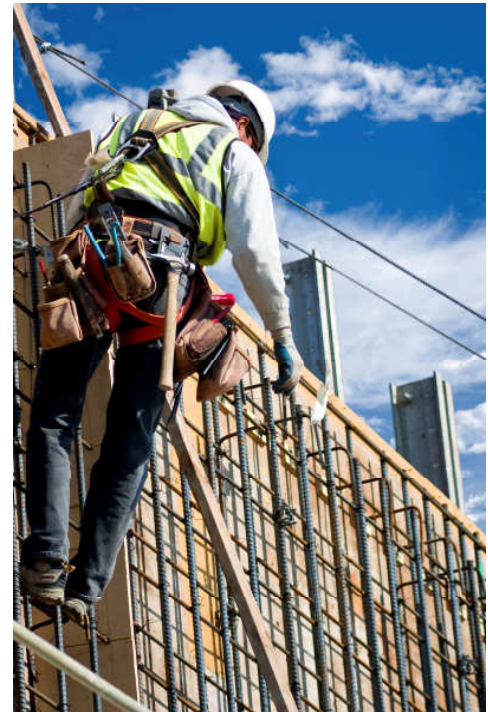
To assist site managers, agents and supervisors to:

- Manage Health and Safety on site in accordance with the current legal provisions and within the context of their management or supervisory role
- Develop an understanding of their responsibilities and accountability for site health, safety and welfare

Objectives

On successful completion the delegate will be aware of, and able to:

- Implement all health, safety, welfare and environmental legislation which affects them during their daily work
- Implement new guidance and industry best practice
- Develop their skills in assessment, planning and implementation of safe systems and methods in the work place.
- Provide examples and opportunities for the study and to analyse health, safety and welfare practices and procedures.
- State their duties and responsibilities with regards to health, safety, welfare and the environment.



Additional Information

SMSTS certification is valid for 5 years; although it is recommended by the CITB that the 2 day refresher course is taken

Location and Course Dates

Not only do we run courses regularly from our Training Centre in Bristol, we also run courses across the UK as a result of demand from BSG Members.

Feel free to call us on 01454 414877 to discuss your requirements, or enquire about specific dates in your area.

In-house / Group Bookings

If you have 6 or more delegates, we can run a course at a venue of your choosing. Prices will depend on delegate numbers and the travel costs for the nearest available trainer, so please contact us for a bespoke quote.

Day 1

08:30 – 08:45	Introduction and administration – course structure and content, aims and objectives.
08:45 – 09:15	Course Level Test – What Do You Know?
09:15 – 09:35	Going Home Tonight – CITB (DVD)
09:35 – 10:30	Safety Pays (business reasons for managing Health & Safety)
10:30 – 10:45	COFFEE
10:45 – 11:45	Health & Safety Law (the legal system)
11:45 – 13:00	Health & Safety at Work Act 1974 and HSE Focus.
13:00 – 13:30	LUNCH
13:30 – 14:00	Course test results and discussion
14:00 – 14:45	Health & Safety policy and the Site Manager
14:45 – 16:45	Group exercise 1 (implementing Health & Safety Legislation)
16:45 – 17:00	Review of Day One - issue self study work

Day 2

08:30 – 08:45	Report back and discussion on exercise one.
08:45 – 09:30	Working at Height – planning and selection of equipment.
09:30 – 10:15	Practical Risk Assessment – fall arrest, coshh, noise, first aid and welfare, drugs and alcohol.
10:15 – 10:30	COFFEE BREAK
10:30 – 12:30	The CDM Regulations, duty holders and their relationships.
12:30 – 13:00	LUNCH
13:00 – 13:30	The Head Protection Regulations.
13:30 – 14:30	Health and Safety Management – lifting appliances, dust and fumes, Personal Protective Equipment.
14:30 – 16:45	Group exercise two – Managers and supervisors responsibilities.
16:45 – 17:00	Review of day two - issue self study work.

Day 3

08:30 – 08:45	Report back and discussion on exercise two.
08:45 – 10:30	Management of Health and Safety - COSHH, noise at work, Asbestos regulations 2006, manual handling, vibration.
10:30 – 10:45	COFFEE BREAK
10:45 – 12:30	Management of Health and Safety continued.
12:30 – 13:00	LUNCH
13:00 – 14:00	Monitoring Health and Safety inspections, surveys, tours, audits, accident investigation reporting pad.
14:00 – 16:30	Site instructions.
16:30 – 17:00	Review of day three - issue self study work.

Day 4

08:30 – 09:00	Report back and discussion on exercise three.
09:00 – 10:30	Communicating the Safety message – information, instruction, training, induction and toolbox talks, signs and posters.
10:30 – 10:45	COFFEE BREAK
10:45 – 11:45	Electricity at work – underground and overhead services, fire, joint code of practice, flammable liquids and liquefied petroleum gasses.
11:45 – 12:30	Site layout – introduction to final course exercise.
12:30 – 13:00	LUNCH
13:00 – 16:30	Group exercise four – site layout.
16:30 – 17:00	Review of day four - issue revision work.

Day 5

08:30 – 08:45	Administration – report back and discussion on exercise - any problems.
08:45 – 10:45	Final preparation of group presentations.
10:45 – 11:00	COFFEE BREAK
11:00 – 12:00	Course revision and special topics
12:00 – 12:30	Examination
12:30 – 13:00	LUNCH
13:00 – 15:00	Exercise presentations
15:00 – 15:15	TEA BREAK
15:15 – 15:30	Course results
15:30 – 16:30	Course review
16:30 – 17:00	Course dispersal

How much will it cost?

Open Courses:

Members: £475 + vat per delegate

Non-Members: £525 + vat per delegate

Price includes course materials, CITB certification, and lunch.

In-house Courses:

Prices available upon request

TO BOOK

Contact the training department now

Tel: 01454 414877

Email: training@bsgltd.co.uk