

# Asbestos Awareness (Half Day)

## Who is it for?

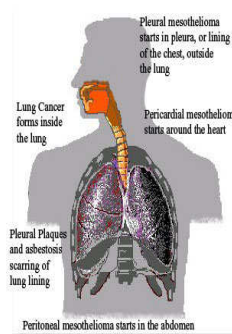
Asbestos Awareness training is required to be given to employees whose work could expose them to asbestos, i.e. all demolition, refurbishment workers, maintenance and allied trades where it is foreseeable that their work will disturb the fabric of a building and Asbestos Containing Materials (ACMs) may become exposed.

The Asbestos Awareness course meets the standards set by the HSE

## Objectives

On successful completion the student will be able to demonstrate a sound knowledge of the following:

- The properties and types of asbestos and their effects on health and safety, including the increased risk of lung cancer for those that smoke.
- The uses and likely occurrence of asbestos and ACM's in building and plant.
- The general procedures to be followed to deal with an emergency such as the uncontrolled release of asbestos dust into the workplace.
- How to avoid risks from asbestos.



## Location and Course Dates

Not only do we run courses regularly from our Training Centre in Bristol, we also run courses across the UK as a result of demand from BSG Members.

Feel free to call us on 01454 414877 to discuss your requirements, or enquire about specific dates in your area.

## In-house / group bookings

If you have 6 or more delegates, we can run a course at a venue of your choosing. Prices will depend on delegate numbers and the travel costs for the nearest available trainer, so please contact us for a bespoke quote.

## Course Programme

TIME	SUBJECT
8:30 – 09:00	Assemble and Coffee
09:00 – 09:45	History and types of asbestos and their effects on health, DVD Mesothelioma
09:45—10:15	The uses and likely occurrence of Asbestos and ACM's
10:15—10:30	COFFEE
10:30 – 11:15	Legal Requirements, Emergencies and Risk Assessment
11:15—11:45	How to avoid risks from asbestos, What to do if you suspect Asbestos is present.
11:45—12:10	Course Test
12:10—12:25	DVD Presentation, Asbestos Alert
12:25 – 12:30	Review and Dispersal

N.B. The above may be liable to alteration to meet the needs of the course members. DVD's may be used to reinforce key training areas.

## How much will it cost?

### Open Courses:

**Members: £80 + vat per delegate**

**Non-Members:**

**£100 + vat per delegate**

### In-house Courses:

Prices available upon request

Price includes course materials, examinations, and Certification.

**TO BOOK**

Contact the training department now

**Tel: 01454 414877**

**Email: [training@bsgltd.co.uk](mailto:training@bsgltd.co.uk)**